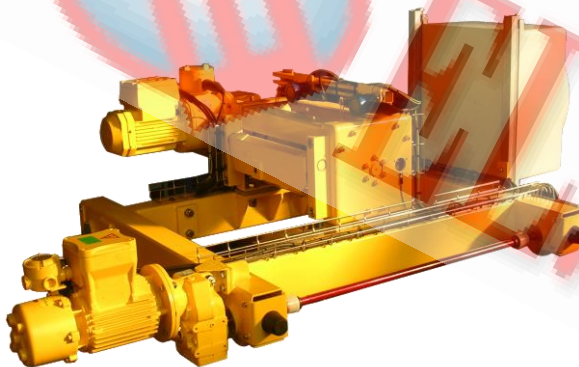


EXPLOSION-PROOF ELECTRIC WIRE ROPE HOIST BWSX



BWSX – two lifting motors



BWSX – bi-rail trolley



Bi-rail trolley-travel limit switch

The **BWSX** electric wire rope hoist is the best as versatility and features, matching requirements of hazardous area. BWSX hoists apply two separate motors connected by a differential gear, avoiding any need of clutch or axial movement of the rotor. The two motors with differential gear give a high reduction ratio in lifting speed (1/10 to 1/13) with the highest service rate of both motors. The presence of two different motors gives the possibility of never stop the service of the hoist, in case of failure of one motor.

High performance equipment

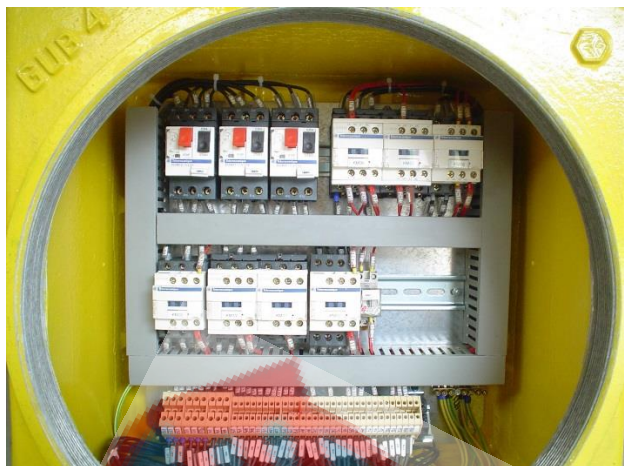
- capacity up to 40T
- high performance rope guide
- load limiter
- up/down limit switch
- bronze wheels on trolleys
- high quality finish
- high performance motors
- anti-condensation heaters
- thermal probes
- first quality electric control components
- basic hazardous area Zone 2 IIB T3
- IP56 protection

On request

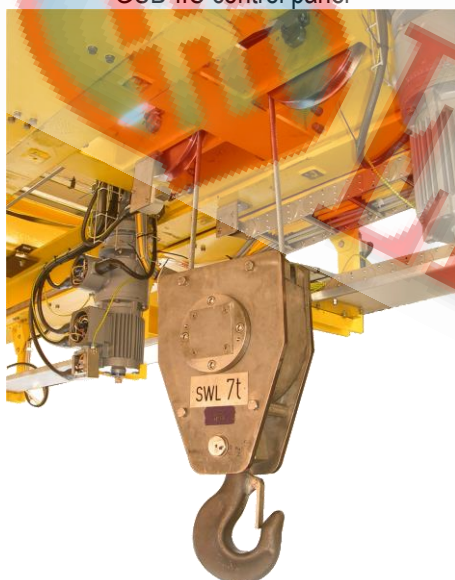
- stainless steel wire rope
- stainless steel hook block
- stainless steel bearings
- sliding assembly of trolley wheels for easy erection



EXPLOSION-PROOF ELECTRIC WIRE ROPE HOIST BWSX



GUB-IIC control panel



Stainless steel hook block



Explosion-proof electric connections

- articulated trolley for curved beams

APPLICATION	CATEGORY	PROTECTION	EX PROTECTION CLASS
Zone 1	II 2 G	Gas	Exde IIB T4
			Exde II C T4
ZONE 2	II 3 G	Gas	Exde II B T3
ZONE 21	II 2 D	Dust	ExtD A21 IP66
ZONE22	II 3 D	Dust	ExtD A22 IP66

BWSX hoists are the answer to oil & gas industries requirements, for explosion protection, according to safety regulations for hazardous areas (ATEX/IECEX) the explosion protected BWX hoists are designed for use in potentially explosive atmospheres in condition with gas or dust.

It is charge of users to define his actual requirements high performance is typical of this explosion-proof electric wire rope hoist.

The brake is fully encapsulated. Dirt cannot enter and brake dust cannot go outside. Very long service life of the asbestos-free brake.

The hoist gear is maintenance free.

The rope guide is designed for high safety and long service life. The drum is designed with high ratio with diameter the rope, in order to minimize the wear.

The wire rope, galvanized, has a minimum safety factor over 5.

- Controls

The control panel box has a flame-proof enclosure (Exd) containing the switch gear, the transformer and the contactors

- Operation safety

Explosion-proof limit switches are applied for highest and lowest hook position

Motor temperature is checked by PTC

High quality aluminum or GRP control pendants are applied, with emergency stop button

All trolleys are fitted with buffers

Electric trolleys are fitted with electric switch for travel limits

- standard controls are available for the following supply voltage:

50hz	:	380, 400, 415, 500 V
60hz	:	380, 400, 440, 460, 480, 600 V



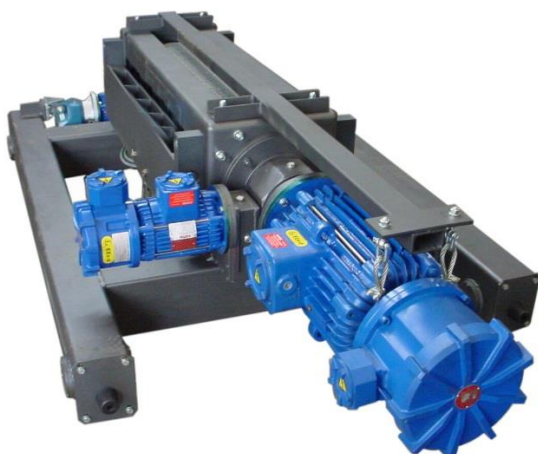
EXPLOSION-PROOF ELECTRIC WIRE ROPE HOIST BWSX



Push buttons station XAW



EJB IIB electric control panel



control voltages:

50hz	:	110 VAC, 48 VAC
60hz	:	120 VAC, 48 VAC

- Travel limit switch

A travel limit switch is applied to the trolley on order to limit the cross travel

Available:

- limiting both directions of travel
- switching over from fast to slow (pre-switching) and limiting both directions of travel

- Hook block

Hook block is supplied as bronze coated. Hook as standard, is supplied painted yellow RAL 1007, hook bronze coated is also available on request

- Outdoor

For outdoor situation IP66 protection is applied
Heaters are applied to motors and control box

- Bronze wheels

Wheels are in solid alloyed bronze

- Painting/corrosion protection

Blasting of steel structure to degree SA2-protection of the whole hoist/trolley according to ambient and specification as required

- Towing arm for power supply

The towing arm for festoon system can be supplied. It is applied to the trolley

- Fall arrest brackets

In order to prevent falling in the case of breakage the trolleys are equipped with arrest brackets

- Buffers for trolleys

Buffers are fitted to all trolleys as standard

- Articulated trolleys

Articulated trolleys are used on curved runways. Two travel motors are recommended for narrow bends

- Main isolator

Max supply voltage 690 V
Explosion protection Exde IIB T4 max Exde IIC T6
Protection to IP65 EN 60529

- Chain lubricant

A lubricated chain has a longer service life



EXPLOSION-PROOF ELECTRIC WIRE ROPE HOIST BWSX

BWSH plus bi-rail trolley IIC proof execution

Liquid grease B0001 and special chain spray B0002 are available

CAPACITY	TYPE	ROPE REEVE	HOOK PATH	DUTY Fem/ISO	ROPE Diam	Lifting Speed	
						m/min	
Kg			m		mm	50Hz	60Hz
3200	BWSX2008	4/1	6	2m/M5	8	4/0,4	4,8/0,48
			12	2m/M5	8	4/0,4	4,8/0,48
5000	BWSX2012	4/1	8	2m/M5	10	4/0,4	4,8/0,48
			12	2m/M5	10	4/0,4	4,8/0,48
	BWSX3250	2/1	8	2m/M5	13	8/0,8	9,6/0,96
			12	2m/M5	13	8/0,8	9,6/0,96
6300	BWSX2015	4/1	6	2m/M5	10	3/0,3	3,6/0,36
			12	2m/M5	10	3/0,3	3,6/0,36
8000	BWSX3020	4/1	8	2m/M5	13	4/0,4	4,8/0,48
			12	2m/M5	13	4/0,4	4,8/0,48
10000	BWSX3025	4/1	8	2m/M5	13	4/0,4	4,8/0,48
			12	2m/M5	13	4/0,4	4,8/0,48
	BWSX4050	2/1	16	2m/M5	16	8/0,8	9,6/0,96
			24	2m/M5	16	8/0,8	9,6/0,96
12500	BWSX3030	4/1	8	2m/M5	13	3/0,3	3,6/0,36
			12	2m/M5	13	3/0,3	3,6/0,36
16000	BWSX4040	4/1	8	2m/M5	15	4/0,4	4,8/0,48
			12	2m/M5	16	4/0,4	4,8/0,48
	BWSX5160	4/1	16	2m/M5	20	6/0,6	7,2/0,72
			24	2m/M5	20	6/0,6	7,2/0,72
20000	BWSX4050	4/1	8	2m/M5	16	4/0,4	4,8/0,48
			12	2m/M5	16	4/0,4	4,8/0,48
25000	BWSX5070	4/1	8	2m/M5	20	3/0,3	3,6/0,36
			12	2m/M5	20	3/0,3	3,6/0,36
32000	BWSX5075	4/1	8	2m/M5	20	3/0,3	3,6/0,36
			12	2m/M5	20	3/0,3	3,6/0,36