



EXPLOSION-PROOF ELECTRIC WIRE ROPE HOIST BWX

The **BWX** electric wire rope hoists are the best as versatility and features, matching requirements of hazardous area. One single lifting speed or two lifting speeds are got with the application of inverter

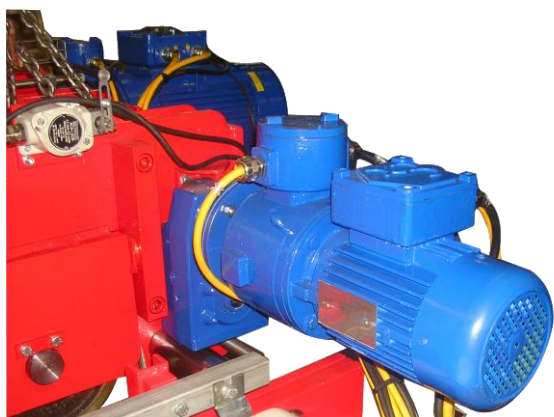


High performance equipment

- capacity up to 40T
- high performance rope guide
- load limiter
- up/down limit switch
- bronze wheels on trolleys
- high quality finish
- high performance motors
- anticondensation heaters
- thermal probes
- first quality electric control components
- basic hazardous area Zone 2 IIB T3
- IP56 protection
- finish appropriate to destination

On request

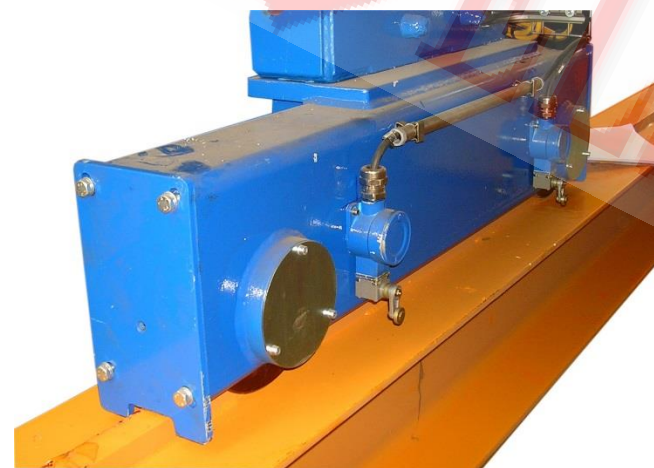
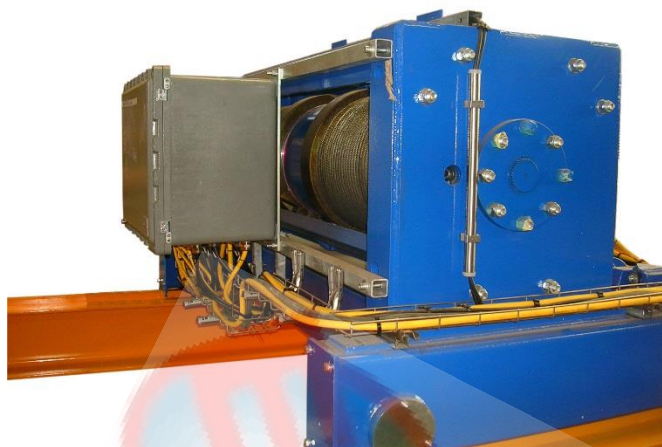
- stainless steel wire rope
- stainless steel hook block
- stainless steel bearings
- sliding assembly of trolley wheels for easy erection
- articulated trolley for curved beams



APPLICATION	CATEGORY	PROTECTION	EX PROTECTION CLASS
Zone 1	II 2 G	Gas	Exde IIB T4
			Exde II C T4
ZONE 2	II 3 G	Gas	Exde II B T3
ZONE 21	II 2 D	Dust	ExtD A21 IP66
ZONE22	II 3 D	Dust	ExtD A22 IP66



EXPLOSION-PROOF ELECTRIC WIRE ROPE HOIST BWX



BWX hoists are the answer to oil & gas industries requirements, for explosion protection, according to safety regulations for hazardous areas (ATEX/IECEX) the explosion protected BWX hoists are designed for use in potentially explosive atmospheres in condition with gas or dust.

It is charge of users to define his actual requirements high performance is typical of this explosion-proof electric wire rope hoist.

The brake is fully encapsulated. Dirt cannot enter and brake dust cannot go outside. Very long service life of the asbestos-free brake.

The hoist gear is maintenance free.

The rope guide is designed for high safety and long service life.

The drum is designed with high ratio with diameter the rope, in order to minimize the wear.

The wire rope, galvanized, has a minimum safety factor over 5

- Controls

The control panel box has a flame-proof enclosure (Exd) containing the switch gear, the transformer and the contactors

- Operation safety

Explosion-proof limit switches are applied for highest and lowest hook position

Motor temperature is checked by PTC

High quality aluminium or GRP control pendants are applied, with emergency stop button

All trolleys are fitted with buffers

Electric trolleys are fitted with electric switch for travel limits

- standard controls are available for the following supply voltage:

50hz	:	380, 400, 415, 500 V
60hz	:	380, 400, 440, 460, 480, 600 V
control voltages:		
50hz	:	110 VAC, 48 VAC
60hz	:	120 VAC, 48 VAC

- Travel limit switch

A travel limit switch is applied to the trolley on order to limit the cross travel

Available:

- limiting both directions of travel

- switching over from fast to slow (pre-switching) and limiting both directions of travel

- Hook block

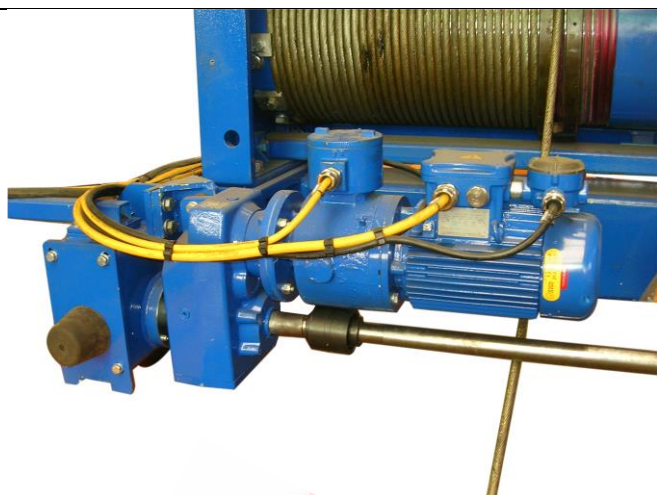
Hook block is supplied as bronze coated. Hook as standard, is supplied painted yellow RAL 1007, hook bronze coated is also available on request

- Outdoor

For outdoor situation IP66 protection is applied
Heaters are applied to motors and control box



EXPLOSION-PROOF ELECTRIC WIRE ROPE HOIST BWX



- Bronze wheels

Wheels are in solid alloyed bronze

- Painting/corrosion protection

Blasting of steel structure to degree SA2-protection of the whole hoist/trolley according to ambient and specification as required

- Towing arm for power supply

The towing arm for festoon system can be supplied. It is applied to the trolley

- Fall arrest brackets

In order to prevent falling in the case of breakage the trolleys are equipped with arrest brackets

- Buffers for trolleys

Buffers are fitted to all trolleys as standard

- Articulated trolleys

Articulated trolleys are used on curved runways. Two travel motors are recommended for narrow bends

- Main isolator

Max supply voltage 690 V

Explosion protection Exde IIB T4 max Exde IIC T6

Protection to IP65 EN 60529

- Chain lubricant

A lubricated chain has a longer service life

Liquid grease B0001 and special chain spray B0002 are available





EXPLOSION-PROOF ELECTRIC WIRE ROPE HOIST BWX



CAPACITY Kg	TYPE	ROPE n°	HOOK PATH m	DUTY Fem/ISO	ROPE Diam mm	1 Lifting Speed m/min		2 Lifting Speed	
						50Hz	60Hz	m/min by	
								50 Hz	60 Hz
2000	BWX1005	4/1	6	1Am/M4	8	4	4,8	4/0,6	4,8/0,7
			10	1Am/M4	8	4	4,8	4/0,6	4,8/0,7
2500	BWX2012	2/1	12	1Am/M4	10	8	9,6	08-gen	9,6/1,2
			24	1Am/M4	10	8	9,6	08-gen	9,6/1,2
3200	BWX1008	4/1	6	1Am/M4	8	4	4,8	4/0,6	4,8/0,7
			12	1Am/M4	8	4	4,8	4/0,6	4,8/0,7
5000	BWX2012	4/1	8	1Am/M4	10	4	4,8	4/0,6	4,8/0,7
			12	1Am/M4	10	4	4,8	4/0,6	4,8/0,7
	BWX3250	2/1	8	1Am/M4	13	8	9,6	8/1	9,6/1,2
			12	1Am/M4	13	8	9,6	8/1	9,6/1,2
6300	BWX2015	4/1	6	1Am/M4	10	3	3,6	3/0,4	3,6/0,5



EXPLOSION-PROOF ELECTRIC WIRE ROPE HOIST BWX

			12	1Am/M4	10	3	3,6	3/0,4	3,6/0,5
8000	BWX3020	4/1	8	1Am/M4	13	4	4,8	4/0,6	4,8/0,7
			12	1Am/M4	13	4	4,8	4/0,6	4,8/0,7
10000	BWX3025	4/1	8	1Am/M4	13	4	4,8	4/0,6	4,8/0,7
			12	1Am/M4	13	4	4,8	4/0,6	4,8/0,7
	BWX4050	2/1	16	1Am/M4	16	8	9,6	8/1	9,6/1,2
			24	1Am/M4	16	8	9,6	8/1	9,6/1,2
12500	BWX3030	4/1	8	1Am/M4	13	3	3,6	3/0,4	3,6/0,5
			12	1Am/M4	13	3	3,6	3/0,4	3,6/0,5
16000	BWX4040	4/1	8	1Am/M4	15	4	4,8	4/0,6	4,8/0,7
			12	1Am/M4	16	4	4,8	4/0,6	4,8/0,7
	BWX5160	2/1	16	1Am/M4	20	6	7,2	6/0,8	7,2/1
			24	1Am/M4	20	6	7,2	6/0,8	7,2/1
20000	BWX4050	4/1	8	1Am/M4	16	4	4,8	4/0,6	4,8/0,7
			12	1Am/M4	16	4	4,8	4/0,6	4,8/0,7
25000	BWX5070	4/1	8	1Am/M4	20	3	3,6	3/0,4	3,6/0,5
			12	1Am/M4	20	3	3,6	3/0,4	3,6/0,5
32000	BWX5075	4/1	8	1Am/M4	20	3	3,6	3/0,4	3,6/0,5
			12	1Am/M4	20	3	3,6	3/0,4	3,6/0,5