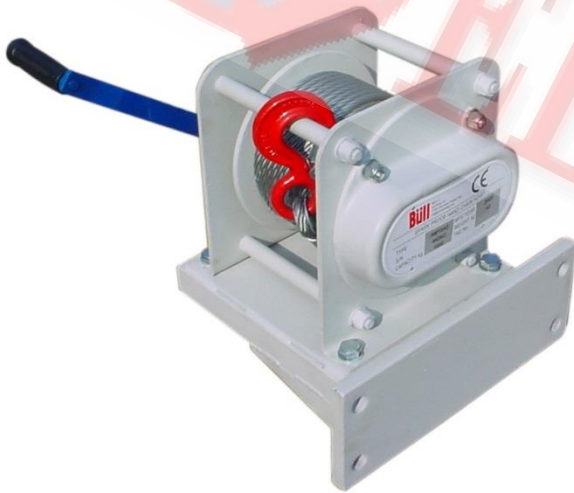


SPARK-PROOF MANUAL SPUR GEAR WIRE WINCHES AMSX



The **AMSX** manual “spur gear” wire rope winches is the best as versatility and features matching requirements of hazardous areas.

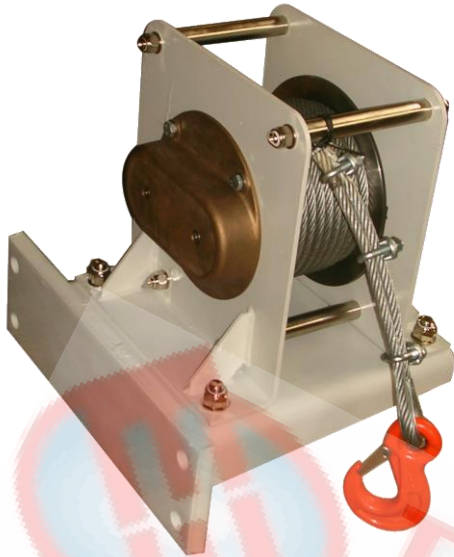
High performance equipment

- capacity up to 5T with one rope
- steel body
- bronze cover of the gear
- bronze ratched wheel
- robust housing
- duty classification according to FEM
- with bronze crank handle sleeve
- automatic load pressure brake
- large drums ensure long lifetime of wire rope

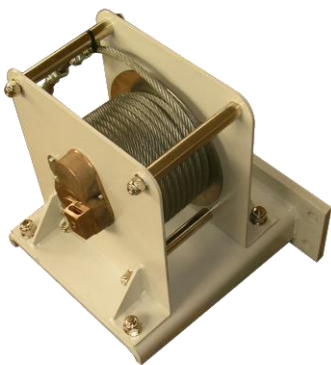
On request

- stainless steel wire rope and accessories
 - stainless steel AISI 316 hook and hook block
 - stainless steel bearings
 - stainless steel frame for HT version
-

SPARK-PROOF MANUAL SPUR GEAR WIRE WINCHES AMSX



Spark-proof manual "spur gear" winch

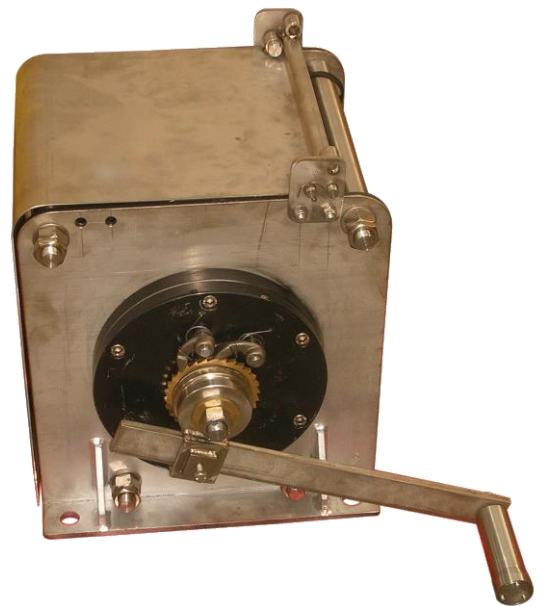
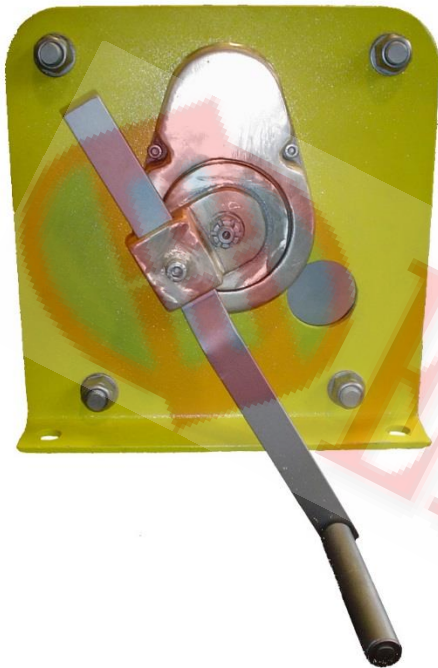


Spark-proof manual "spur gear" winch

SPARK-PROOF MANUAL SPUR GEAR WIRE WINCHES AMSX



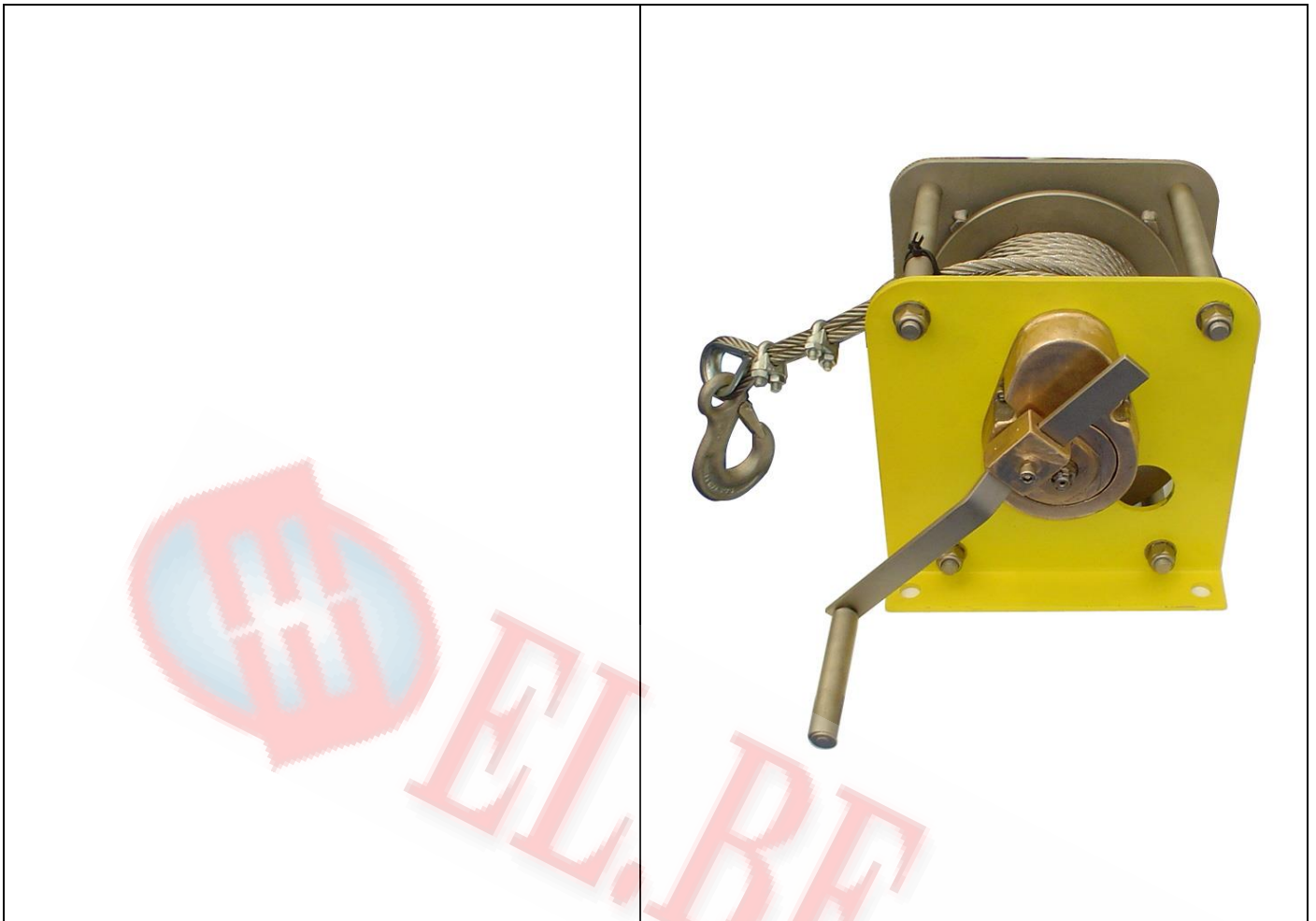
Spark-proof manual "spur gear" winch



Spark-proof manual "spur gear" winch
High-tech execution



SPARK-PROOF MANUAL SPUR GEAR WIRE WINCHES AMSX



WIRE ROPE

Special ELBE wire rope of high strength, galvanized.
Stainless steel rope is available as well, on request

DRIVE

The unit assembly consists in a epicycloidal gear driving the drum

HOOK BLOCK

Winches up to 5000KG are supplied with single rope in order to improve the ergonomic handling of the hook

DRUM

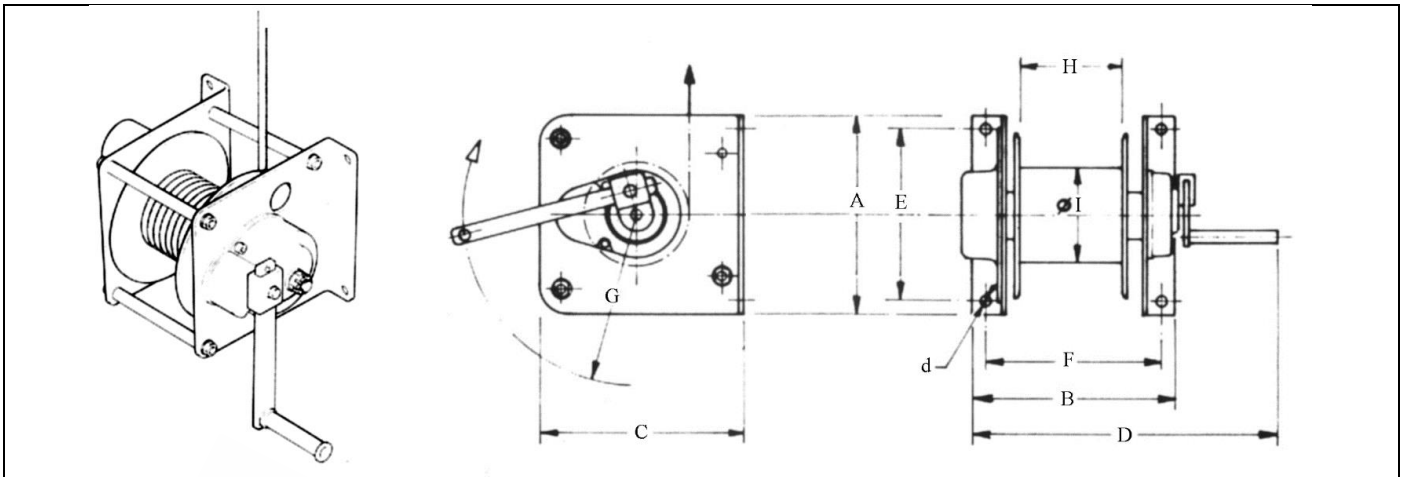
The drum diameter is according to the rope in order to get long life of the same. The wire rope is blocked to the drum by apposite clamps

BRAKE

The brake consists in 4 quadruple-start thread shaft wich controls the axial moving of the flange closing the fiber discs when toothed bronze wheel is acted by the dropping load



SPARK-PROOF MANUAL SPUR GEAR WIRE WINCHES AMSX



CAPACITY Lifting	Pull 0° tilt	TYPE	FALLS	ROPE DIAM	HAND EFFORT	MAX ROPE	A	B	C	D	E	F	G	Weight no rope
Kg	Kg		n°	mm	daN	m	mm	mm	mm	mm	mm	mm	mm	Kg
1000	4000	AMSX010	1	8	10	35	290	300	295	480	250	260	250	25
1500	5000	AMSX015	1	9	16	27	290	300	295	480	250	260	250	30
2000	10000	AMSX020	1	10	20	25	290	300	295	480	250	260	300	30
3000	15000	AMSX030	1	12	23	25	320	320	300	172	270	280	320	40
5000	20000	AMSX050	1	16	25	35	450	400	450	172	380	350	400	80