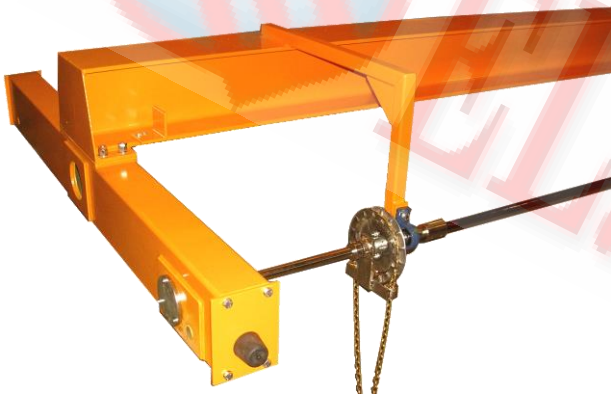


SPARK-PROOF MANUAL OVERHEAD CRANES MOTX



ELBE spark-proof manual cranes are the best as versatility and features matching requirements of hazardous areas

High performance equipment

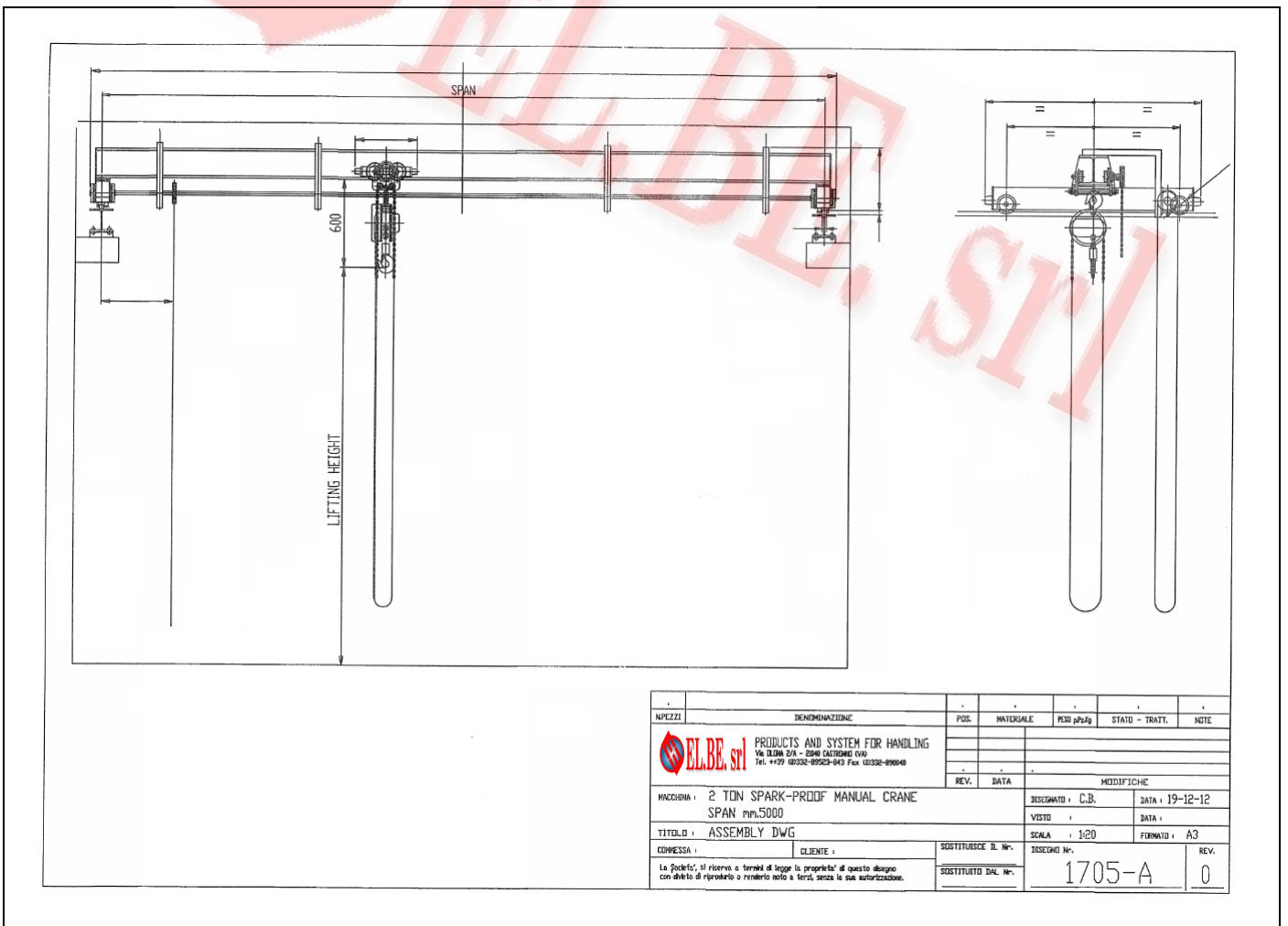
- capacity up to 10T
- applying SLAS and SHAS trolley/hoists
- rolled H beam or box type girder according to capacity and span
- single girder and double girder travelling cranes
- bronze wheels
- stainless steel hand chain
- stainless steel hand wheel
- finish appropriate to destination
- see "spark-proof" manual hoists for features

On request

- stainless steel shafts and transmission mechanisms

NOTE: double girder execution available

SPARK-PROOF MANUAL OVERHEAD CRANES MOTX



PIECI	DENOMINAZIONE	POS.	MATERIALE	PESS p/2kg	STATO - TRATT.	NOTE
ELBE srl PRODUCTS AND SYSTEM FOR HANDLING Via ILONA SPA - 2040 CASTIGLIONE CIVO Tel. +39 0352-89523-043 Fax 0352-890040						
MACCHINA : 2 TON SPARK-PROOF MANUAL CRANE		DISGNATO : C.B.		DATA : 19-12-12		
SPAN min.5000		VISTO :		DATA :		
TITOLO : ASSEMBLY DWG		SCALA : 1:20		FORMATO : A3		
CODICISSA : _____ CLIENTE : _____ La Società, si riserva a terzi di legge la proprietà di questo disegno con diritto di riprodotto o ristampato solo a terzi senza la sua autorizzazione.		SOSTITUISCE IL N.:		DISCENZI N.:		REV.
SOSTITUITO DAL N.:		1705-A				0

SPARK-PROOF MANUAL OVERHEAD CRANES MOTX

